

# Wattle Tree

**G** **G**  
so so

Wat - tle

**E**  
mi

tree,

**G** **G**  
so so

Wat - tle

**E**  
mi

tree,

**G** **G**  
so so

gold and

**A** **A**  
la la

yel - low

**G** **G**  
so so

bright to

**E**  
mi

see.

**G** **G**  
so so

Gul - ing

**E** **E**  
mi mi

sea - son

**G** **G**  
so so

wat - tles

**E**  
mi

bright,

**G** **F**  
so fa

what a

**E** **D**  
mi re

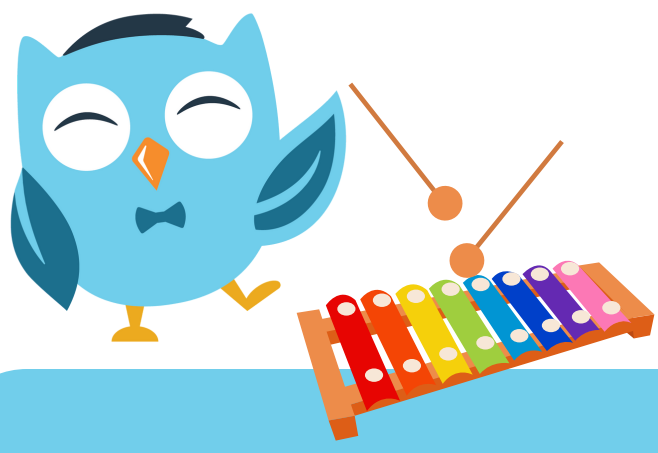
love - ly

**C** **C**  
do do

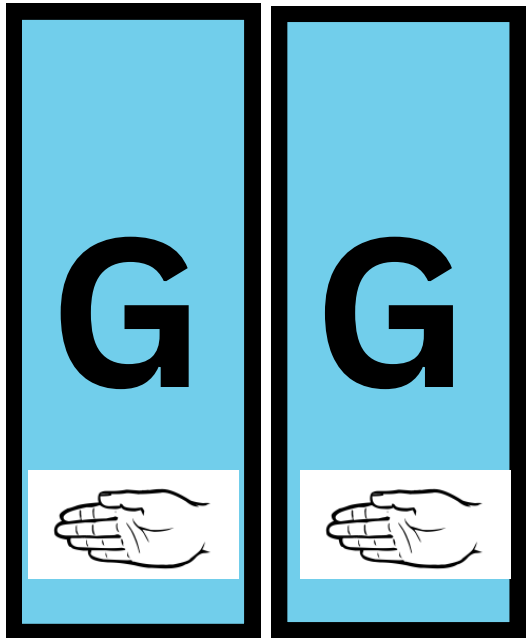
nat - ural

**C**  
do

sight.



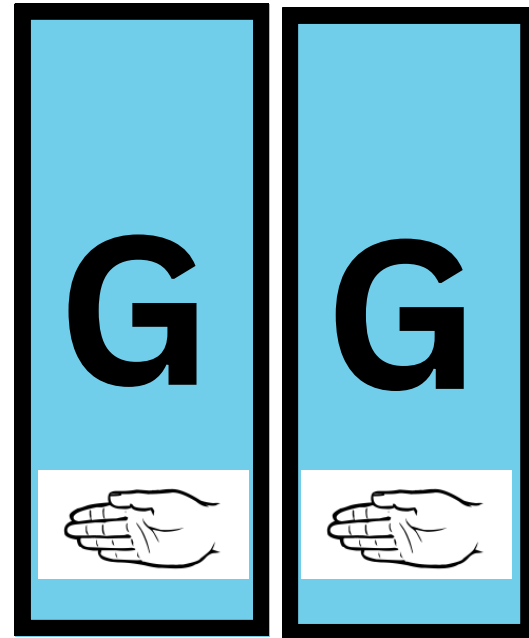
# Wattle Tree



Wat - tle



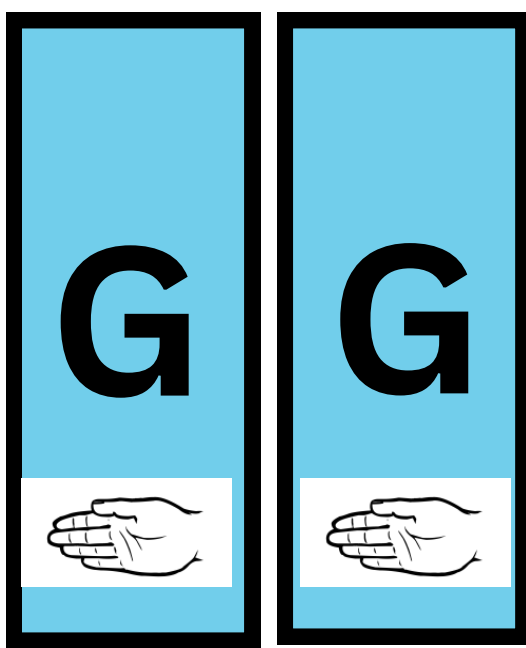
tree,



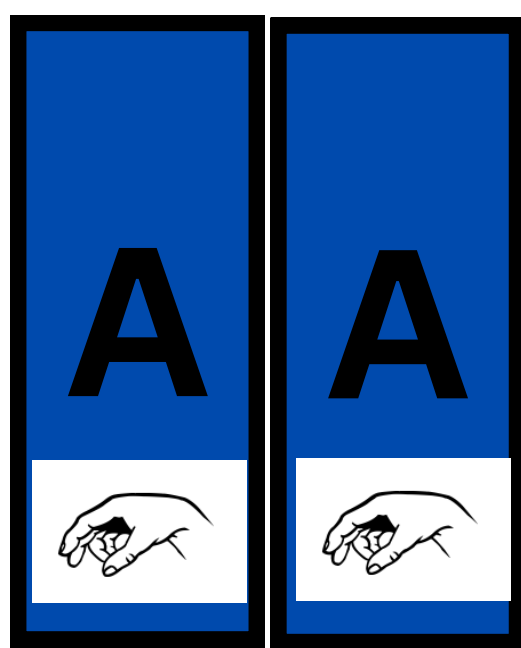
Wat - tle



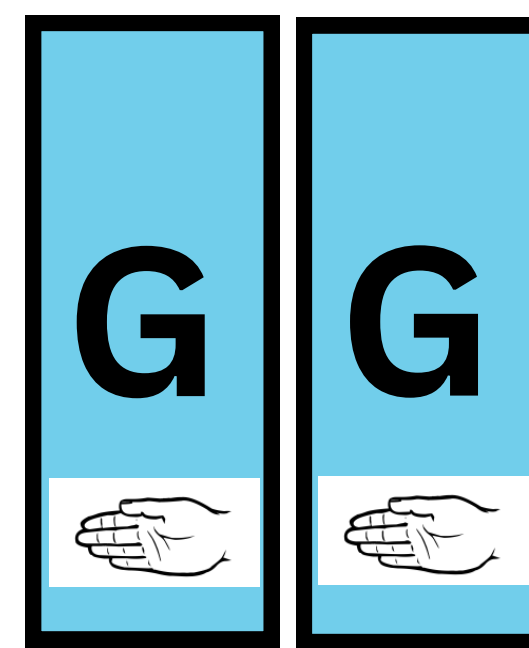
tree,



gold and



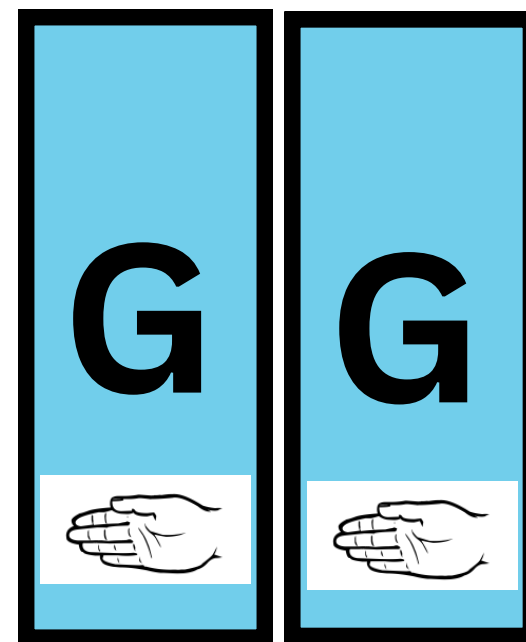
yel - low



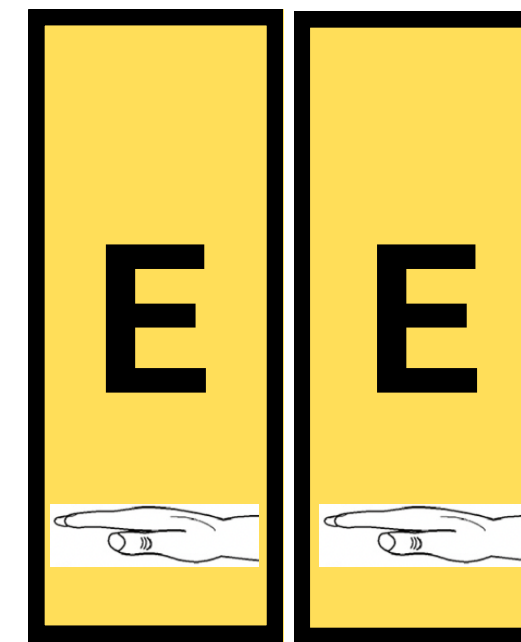
bright to



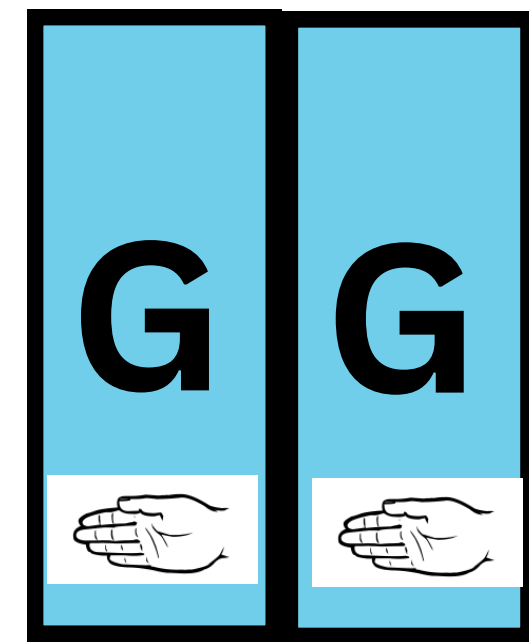
see.



Gul - ing



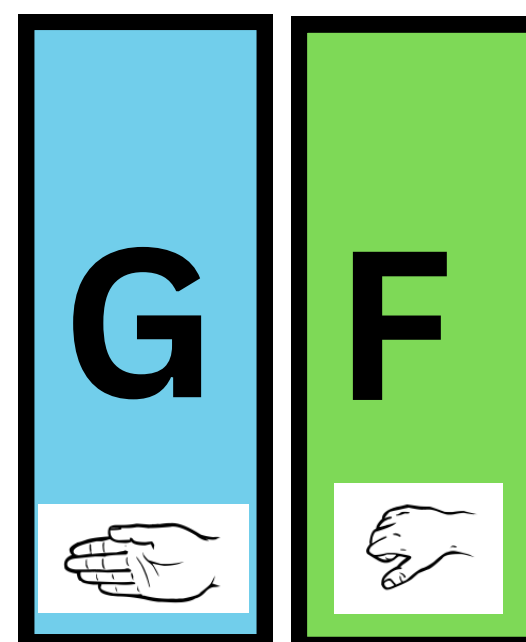
sea - son



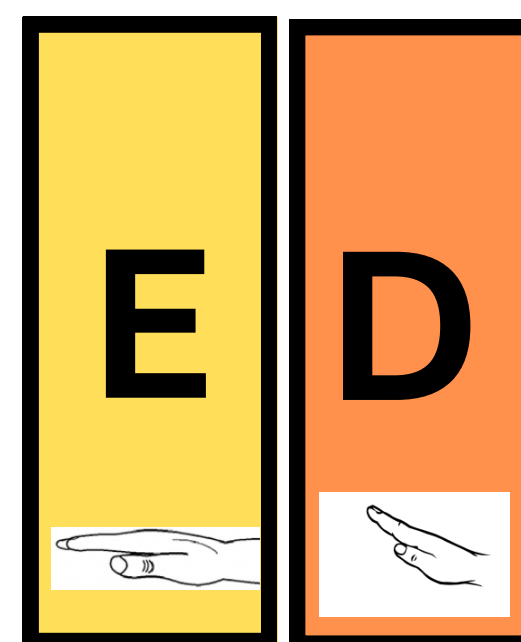
wat - tles



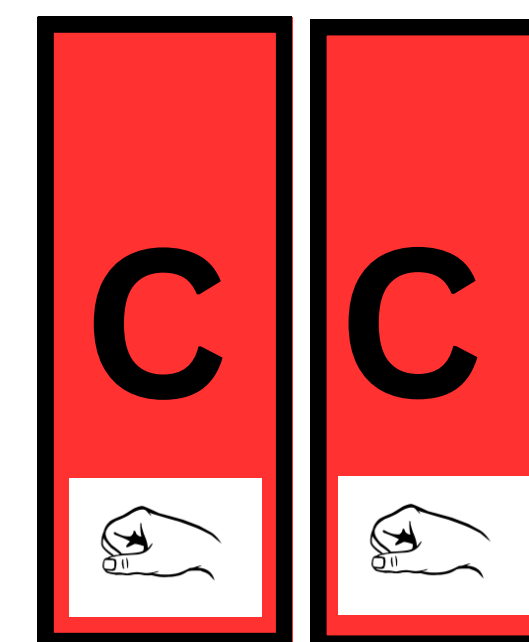
bright,



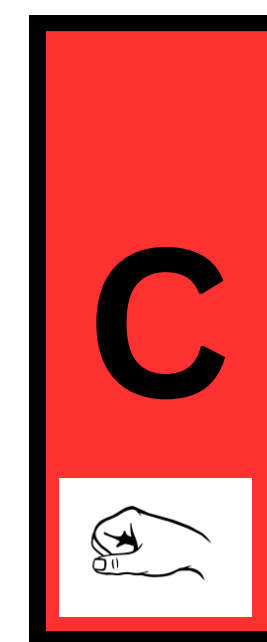
what a



love - ly



nat - ural



sight.